

CONNECTORS FOR CONSTRUCTION



WHO WE ARE

Gebr. Bodegraven (GB) is a friendly family-owned business that has stood for reliability and craftsmanship for generations. Our business activities primarily focus on the production of construction-related products made from metal and plastic. Our solutions play a significant role in connecting components in construction projects. Our product range includes solutions for structural work, frame and element anchoring, cavity wall ties, wood connections and garden hardware. Approximately 95% of our products are manufactured in our own factory.

In addition to this modern production facility, GB also has a tool shop where the dies and molds for the machines are made and maintained. Product development is carried out in-house. We actively collaborate with professional trade, construction and industry sectors to keep our product range up-to-date and to offer solutions for issues arising from practical construction. GB fulfills an important stockholding function for its customers and processors. We understand that service is important and therefore our delivery rate consistently remains at a high level.

The business transactions of GB mostly occur through professional trade channels. All products comply with current European standards and come with the relevant certifications. The properties of the products are theoretically and practically substantiated and tested.



HISTORY

HISTORY

In 1881, GB was founded on the Dorpsstraat in Nieuwkoop, directly adjacent to the Nieuwkoopse Plassen nature reserve. At that time, there were multiple blacksmiths in the village because Nieuwkoop was located on an important waterway route and intensive agriculture and reed cultivation took place in the region. This created a demand for tools, parts and repairs. Hard work was essential

and competition was fierce during those years.

Two brothers, with the surname Bodegraven, joined forces with several other blacksmiths to achieve a stronger market position. Their goal was twofold: to establish an efficient production facility and to create a market- and customer-oriented business operation.



1984
The one billionth
cavity anchor



Gebr. Bodegraven from the air:
on the left, the original location and
on the right, the current location.



1989; Start of plastic
product manufacturing

The company grew and increasingly specialised in standardised products for making connections for components in home construction. The manual labour of blacksmithing was gradually replaced by machines. The company buildings were located on a dike and weak peat soil. Over time, this created limitations due to the increasingly heavier machines. Therefore, in 2000, the company moved from the village centre to its current address on Atoomweg.

The move created new opportunities for expanding the machinery and further developing business activities. In our factory of over 40,000m², we have, among other things, an injection moulding hall for plastic products, a wire hall for our wire products and a band hall for the production of angle brackets. <

PRESENT

GB has always maintained direct contact with the end users of its products, mostly skilled professionals from the construction sector. As a result, product development is a natural and logical continuous process within our company, ensuring that our range meets market demands and developments in construction.

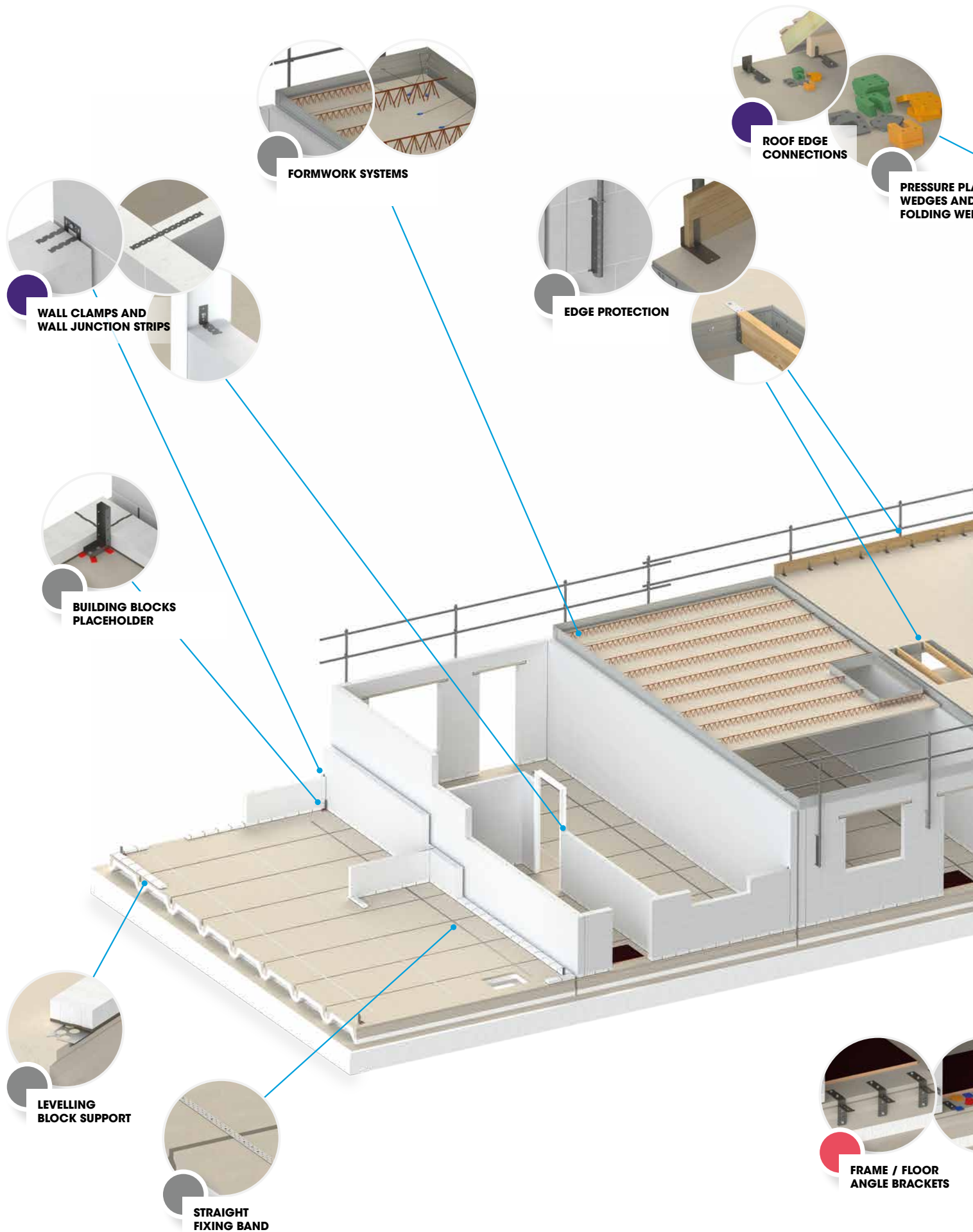
The assortment now includes more than 3.500 products, each serving a specific and often essential purpose within a construction project. Believing that everything can always be done better and smarter, we optimize existing products or develop new ones. This helps to work more efficiently and practically on construction sites.

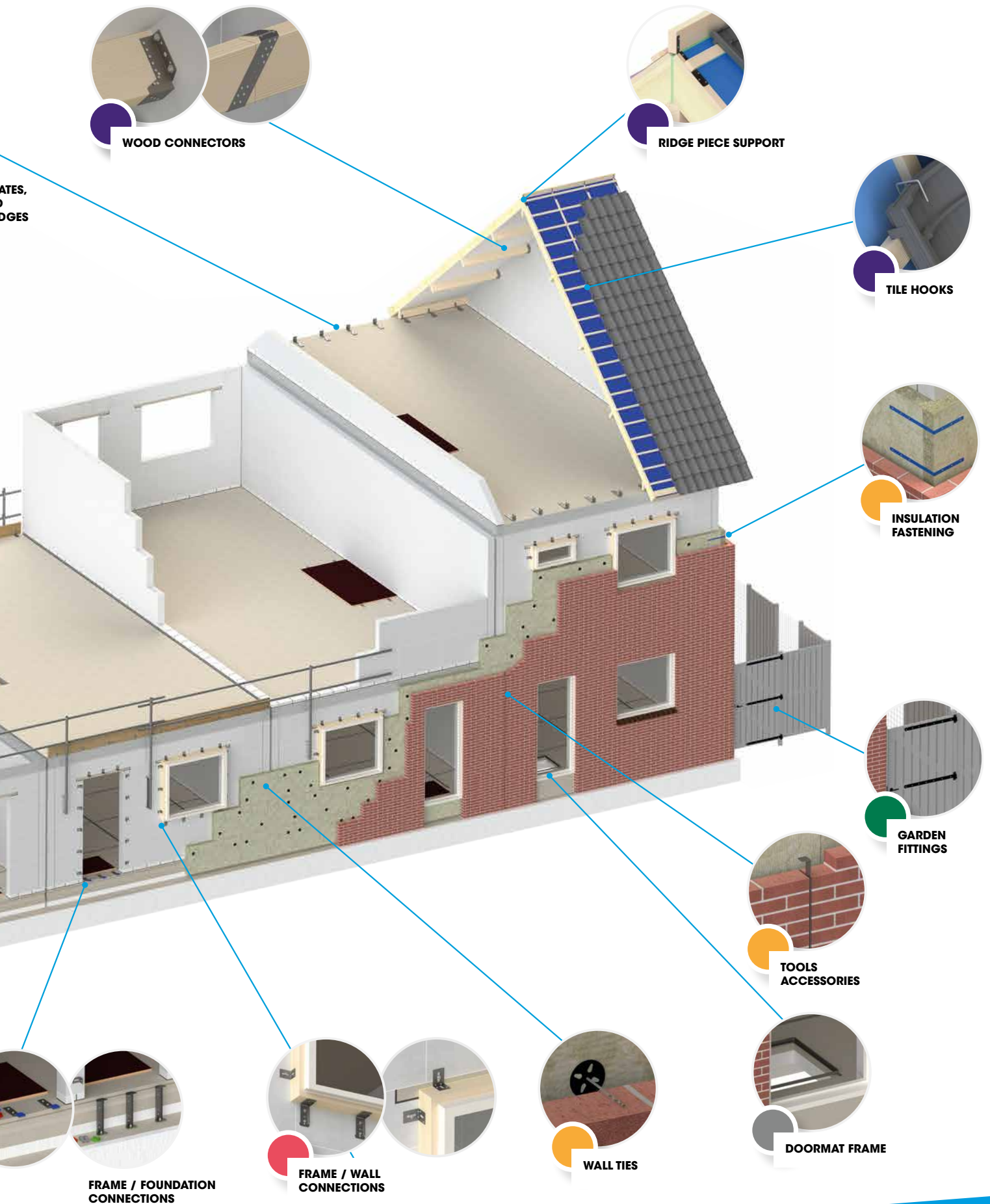
In addition to physical products, GB offers an extensive range of supporting materials and services. These include documentation, online calculation tools, instructional videos, project advice and more. We understand better than anyone how challenging it can be to select the right solution from our range within the great diversity of construction techniques. Especially as regulations increasingly demand accountability for completed construction projects.

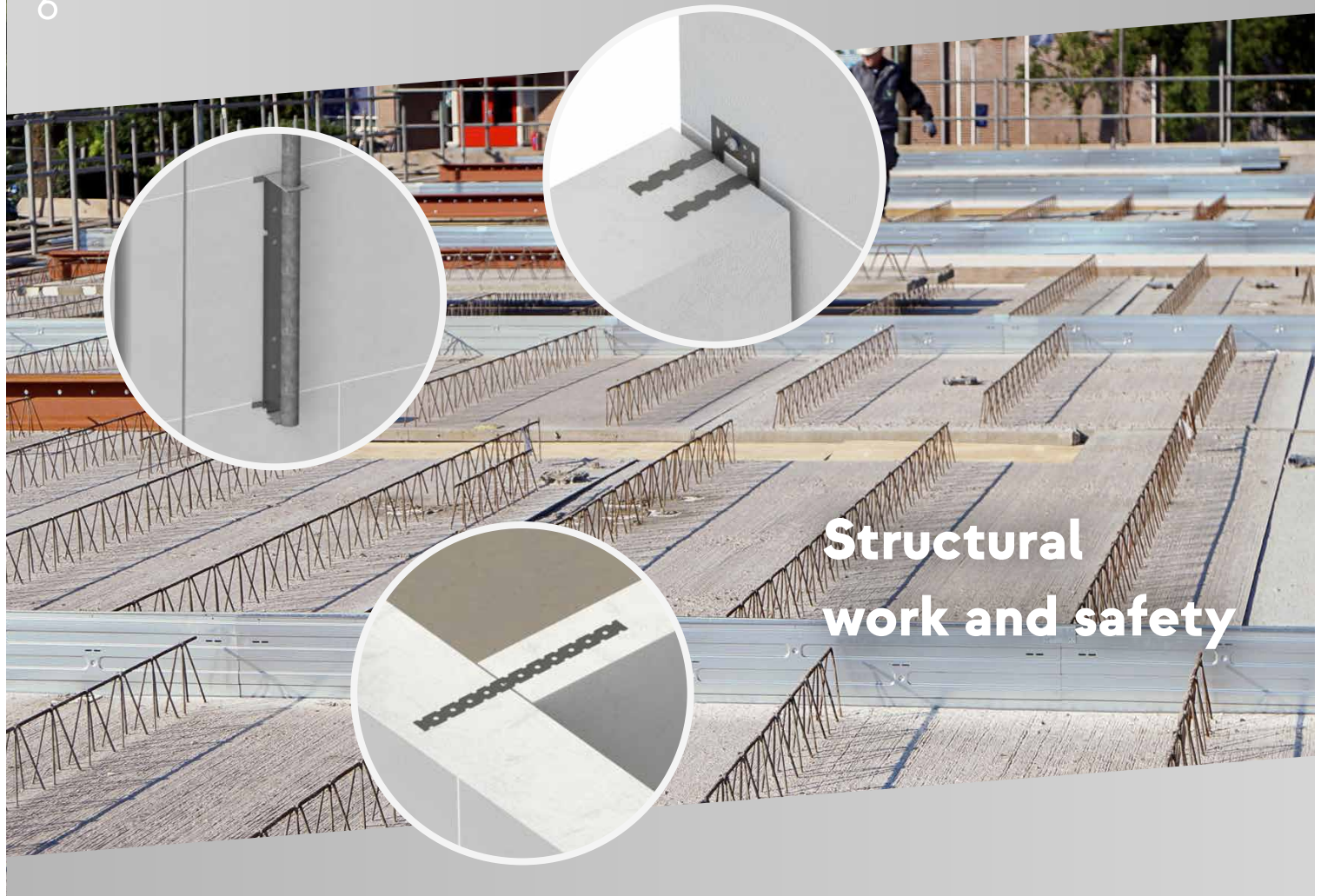
GB still embodies the family culture of its early days, now led by the fifth generation. The company is distinguished by a personal approach combined with our craftsmanship. This method of operation is also appropriate for our industry and business relationships. After all, we've been doing this together for years, with passion and pleasure. <

OUR CAPABILITIES

The image below provides an impression of our broad and extensive product range:







Wall ties and insulation fastening



Element- and windowframe connectors



Wood connectors



Garden fittings



XL-connectors



THE SUSTAINABLE PILLARS OF GEBR. BODEGRAVEN

Corporate Social Responsibility

PEOPLE

GB is a company of and for people. After all, it's people who make, buy and process our products. Additionally, our solutions are an essential part of constructions for buildings where people work, live and gather. These are places where those same people should feel safe, comfortable and at home. Our human approach takes into account:



- Procurement of fair raw materials from reputable suppliers
- Transparent communication
- A safe working environment
- Periodic health checks
- Sustainable collaboration
- Respect for each other
- Room for personal development of employee

ENVIRONMENT

Founded in 1881 and still located on the edge of the "Nieuwkoopse Plassen" nature reserve, GB understands better than anyone that we must be careful with our own environment and that of others. Within this shared responsibility, GB actively and consciously contributes by, for example:



- Minimal waste
- Separation of waste streams
- Recycling of residual metal production materials
- Reuse of residual plastic production materials
- Use of sustainable high-quality raw materials
- LED lighting in company buildings
- Modern and efficient internal transportation
- 2.310 solar panels with an estimated CO₂ savings of 277.200 kg
- Gas-free heating of approximately 3.500 m² of our company premises
- Approximately 15.000 m² of our company premises is largely heated with the residual heat from production activities

SOCIETY

GB produces smart solutions that play an important role in efficiently realizing energy-efficient buildings. In addition to the core activities of our company, we have a sustainable outlook on the future and our social role within society. After all, society includes us too! As a Dutch family business, GB contributes to this by:



- Sponsoring social events
- GB is a recognized training company
- Collaboration with vocational training institutes
- Practical visits for primary and secondary education
- Social employment opportunities
- Greenery on the company premises

KNOWLEDGE CONNECTS

Every construction situation requires specific attention and solutions. In this regard, knowledge of construction techniques, regulations, and project management is extremely relevant. GB is happy to advise you in the areas of cavity, frame and element anchoring.

Since our founding in 1881, we have been working with the construction industry to continuously improve our solutions. This ensures efficient construction and excellent final results for all involved parties, in line with applicable laws and regulations.

In addition to producing and supplying a wide range of connectors for construction, at GB, we pay great attention to the technical foundation and knowledge transfer to the trade and ultimate processors of our solutions. There is indeed much to know about which products are best suited for which situation and how they can be best processed. Additionally, we learn from practice and the challenges encountered therein, keeping us sharp and our assortment up-to-date.

The consultants of GB frequently conduct on-site demonstrations, toolboxes, training and advice. We are happy to do this, but we also offer the opportunity to visit our company address in Nieuwkoop by appointment. In late 2019, we proudly put a new reception and training facility into use, "de Ruimte voor de verbinding" (translated: the area where we can connect)

Here, theory and practice come together in an informal setting. The space is ideal for presentations, meetings and training sessions. Within the practical and versatile layout, various practical details are displayed incorporating GB solutions. There is a shelf setup for discussing possibilities for store presentation with the trade. We provide an overview of our modern production facility and logistics and of course, there is a practical corner for physically assembling the products. Naturally, the space provides a good impression of the craftsmanship and rich history of GB.

At GB, we pass on knowledge through generations! This makes our products complete and reliable solutions. This is important because our connections serve an essential purpose within construction structures.

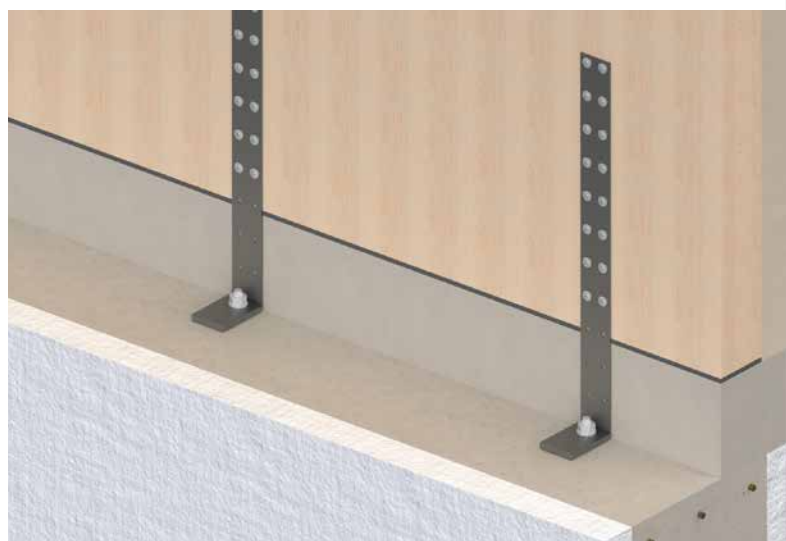
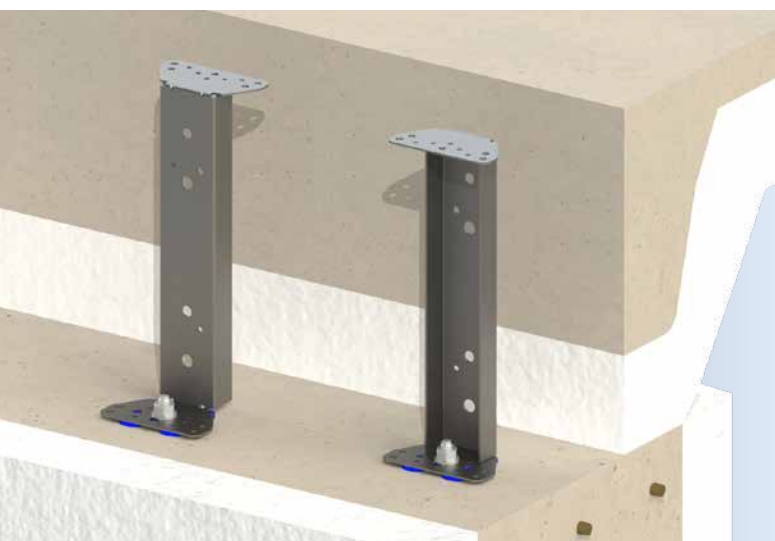
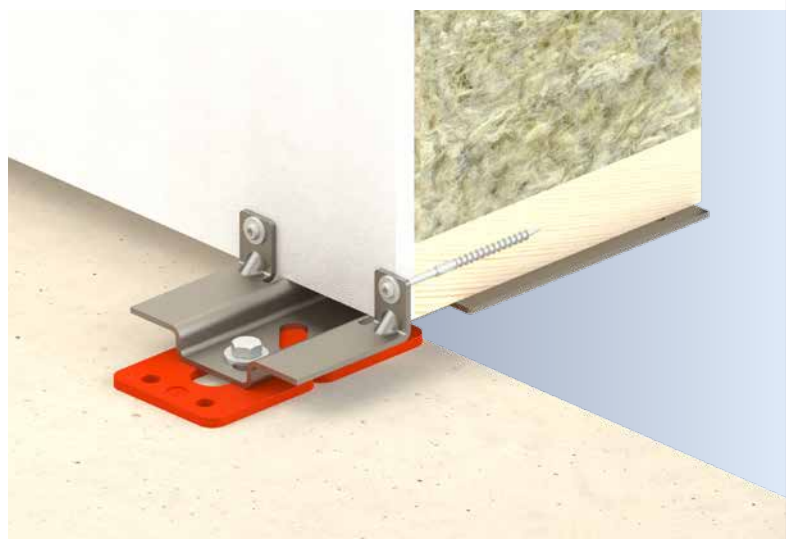
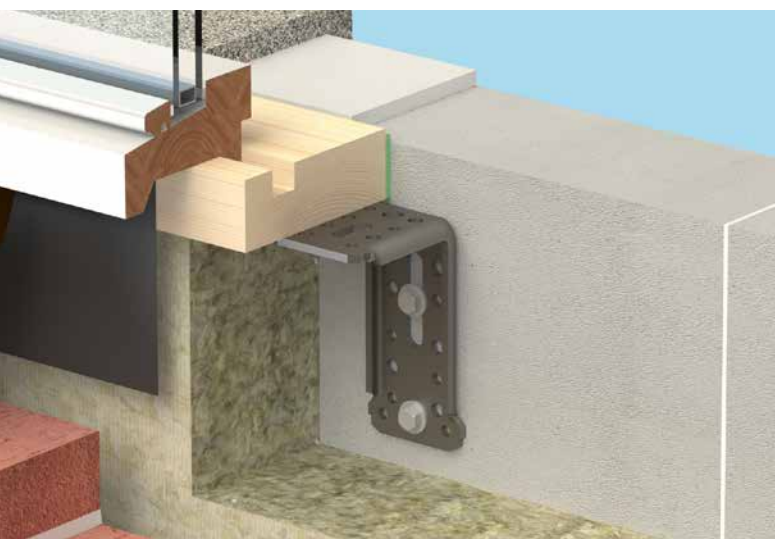
Interested in visiting our "Ruimte voor Verbinding", on-site training, or customized project advice? Please feel free to contact us. <





GB CONNECTS

**WITH ADVICE THAT CARPENTRY & CONCRETE
MANUFACTURERS CAN RELY ON**





GB CALCULATION TOOL

The installation of window frames and timber frame elements requires thorough preparation. It is crucial to know exactly what is attached to what and in which manner. Additionally, a reference period of 50 years must be guaranteed. For example, consider a wooden frame measuring 2 x 3 meters equipped with triple glazing against a calcium silicate inner wall. Which connection from the wide range of GB products is the most suitable in this case?

In collaboration with the industry association for the carpentry industry, GB has developed a practical online tool, the GB Calculation Tool. In a few simple steps, this tool helps you select the right anchoring system tailored to your construction situation. All of this, of course, complies with the applicable standards and practice guidelines, such as KVT (a publication of the Dutch Association of the Carpentry Industry). The GB Calculation Tool also generates a report with the entered specifications and the recommended anchoring solution. This is convenient for work preparation or the project dossier.

The GB Calculation Tool is free to use via www.gb.nl. For specific and/or complex questions regarding construction anchoring, please contact our advisors at techniek@gb.nl.





**QUALITY THROUGH
CRAFTSMANSHIP,
GENERATION AFTER
GENERATION**

ALSO LOOK AT OUR OTHER OPTIONS

GB INSTRUCTION VIDEOS

Short animation videos with clear explanations on the correct application of GB's solutions



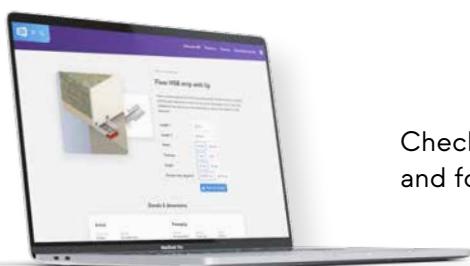
GB TECHNICAL BOOK

The technical background of materials, products and applications, clearly described



GB PROGRAMME OVERVIEW

GB's product range, available online and as a physical catalogue



Check our website www.gb.nl for other useful information and follow us on LinkedIn for the latest news

This is a publication of Gebr. Bodegraven bv

No rights may be derived from its contents.
Text and visual material may be copied only with the permission of Gebr. Bodegraven bv.
June 2024, Nieuwkoop

GB GEBR.BODEGRAVEN
connectors for construction

Atoomweg 2
2421 LZ Nieuwkoop
The Netherlands
Tel.: +31 (0)172 52 01 10
info@gb.nl

